

4-H School Enrichment

University of Nebraska-Lincoln Extension - Madison County

<http://madison.unl.edu>

snelson7@unlnotes.unl.edu

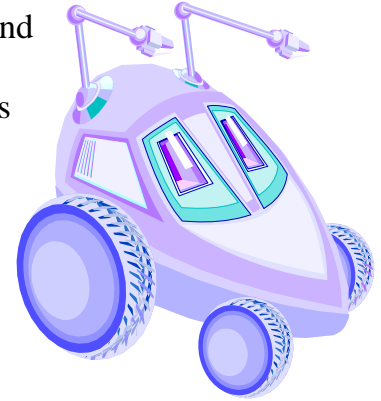
Check our web page.

E-mail for more information



Robotics

Hands-on Lego's are fun for most kids as they learn how to design and build their robot using Lego MindStorm Kit. The Robolabs software enables students to learn to program their computer. Program teaches problem solving, critical thinking, decision making, teamwork, command actions, and using the computer. Program aimed for students in grades 4-8.



4 Lego kits and computers are rented out for \$40 a month.

Content Standards: Science: 4.6.1, 4.6.2

GPS

Global Position Systems is a hands-on workshop to teach youth how to use satellite technology. Also they will improve the following skills: navigation skills, language, math and geography. This interactive program is designed for upper elementary students. Youth will learn compass basics as they follow simple patterns and instructions. GPS will be introduced and youth will be given the hand held receivers to explore various problems outside. Classes are limited to 60 students. Classes will be held outside at Local Park or School.



Cost is 2.00 per student

Content Standard: Social Studies/History: 4.1.10, 4.1.11, 4.1.12

Mathematics: 4.3.2

Kids Growing with Grains



A lesson on grain production, consumption for humans and animals, and nutritional benefits is taught. They will also learn about the planting, growing, and harvesting of grain crops. Then they will learn about some of the everyday products that are by-products of grains. By the end of the session, students will have completed worksheets, recipes, and created a grain jar.

Session will be directed by an Extension Staff and will cost \$0.75/student.

Content Standard: Science: 4.4.3

Social Studies/History: 4.1.11